



## White Cross Bay Holiday Park & Marina, Ambleside Road, Windermere, LA23 1LF

- 2017 Prestige Forester
- Sited on Pony Meadow with Lake View
- Wrap Around Decking Ideal for Outside Dining and Entertaining
- Exterior Patio Area with Steps Down to Stream
- Fully equipped kitchen with modern appliances
- Two Bedroom Holiday Lodge
- Located on White Cross Bay Holiday Park
- Off Road Parking for 2 Cars
- Long Lease

Contact Annette & Team Tempo **NOW**

**01772 633399**

**info@tempoleisure.co.uk**

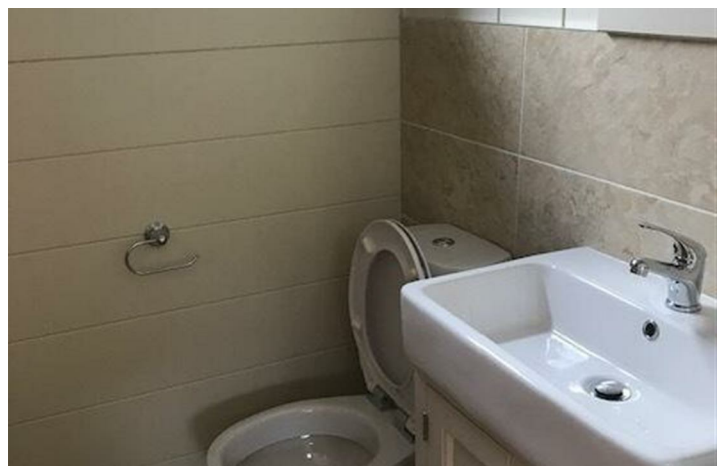
**www.tempoleisure.co.uk**



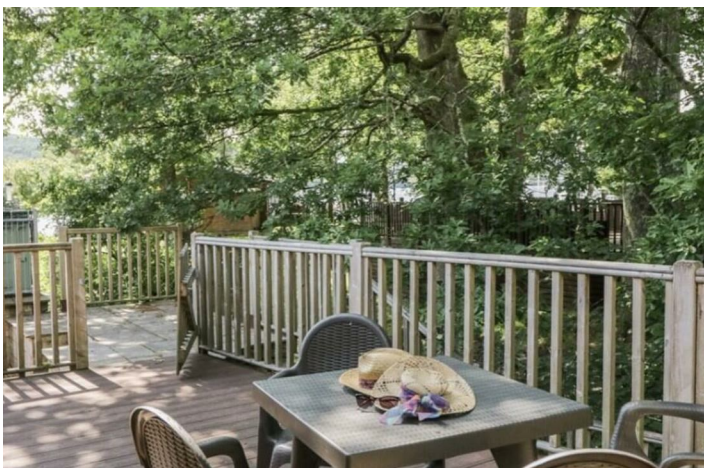
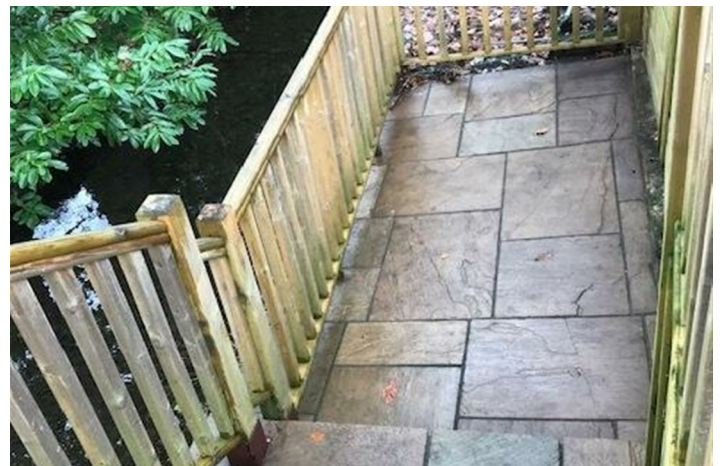
Nestled within the picturesque White Cross Bay Holiday Park, this charming mobile home offers a delightful retreat with stunning views of Lake Windermere. Spanning an impressive 42 x 14 feet, the lodge features two well-appointed bedrooms, making it an ideal getaway for families or couples seeking a tranquil escape.

The first bedroom is a comfortable double with the added convenience of an en suite shower, while the second bedroom is a cosy twin room, perfect for guests or children. The property also boasts a separate bathroom, ensuring ample facilities. The heart of the home is a fully equipped kitchen, complete with a washer dryer and dishwasher, making everyday living effortless. The dining area comfortably seats four, providing a lovely space for meals and gatherings. The spacious living room is designed for relaxation, with direct access to a patio that leads onto a decking area, where you can soak in the breath-taking views of the lake.

This lodge is fully gas central heated, ensuring warmth and comfort throughout the year. Just a two-minute stroll from the shores of Lake Windermere, you can easily enjoy the natural beauty and recreational activities the area has to offer. Additionally, the property features off-road parking for two cars.



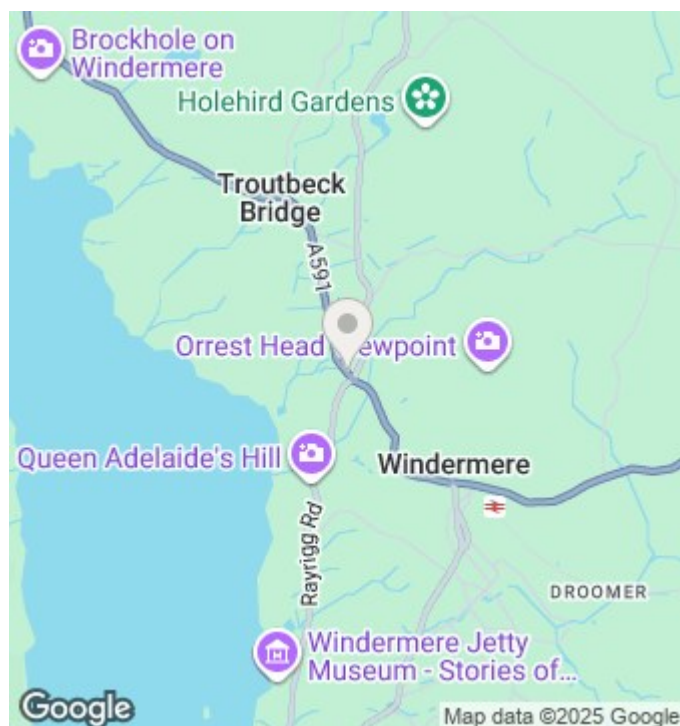






## Viewings

Viewings by arrangement only. Call 01772 633399 to make an appointment.



## Notice

Please note we have not tested any apparatus, fixtures, fitting or services. Interested parties must undertake their own investigation into the working order of these items. All measurements stated in this brochure are approximate and photographs provided are for guidance only. We are advised that the property is subject to site fees.

### Terms & Conditions Misrepresentation Act 1967:-

tempoleisure.co.uk looks to ensure that all our sales particulars are accurate and reliable, we believe the above details to be correct but their accuracy cannot be guaranteed and they do not constitute any part of an offer or contract. Any intending purchasers or lessees must satisfy themselves by inspection or otherwise as to the correctness of each statement in these particulars before entering into any formal contract to purchase this property.

### Arrange A Viewing

If you are interested in viewing a property through tempoleisure.co.uk please call our team on 01772 633399 or email [info@tempoleisure.co.uk](mailto:info@tempoleisure.co.uk)

### Property Listing

If you are thinking of selling your property tempoleisure.co.uk will be more than happy to help, please call our team on 01772 633399 or email [info@tempoleisure.co.uk](mailto:info@tempoleisure.co.uk)

Contact Annette & Team Tempo **NOW**

**01772 633399**  
**[info@tempoleisure.co.uk](mailto:info@tempoleisure.co.uk)**  
**[www.tempoleisure.co.uk](http://www.tempoleisure.co.uk)**